



Uniform Policy

DOCUMENT INFORMATION			
Reviewed by: Full Governing Body			
Last Review:	Summer 2024	Next Review:	Summer 2027
Review Cycle:	3 yearly Consultation Summer 2024		

Uniform

The school has a uniform which all children are expected to wear. Our children look very smart in the correct uniform, and it is important that all families support the requirements as detailed below.

We have ensured that the cost of our school uniform is reasonable, can be purchased at a range of retailers and secures the best value for money, in line with statutory guidance from the Department of Education. [Cost of school uniforms - GOV.UK \(www.gov.uk\)](http://www.gov.uk)

We have also tried to ensure that, where possible, parents do not need to purchase multiple expensive items such as coats and trainers.

The Department for Education strongly encourages schools to have a uniform as it can play a key role in:

- Promoting the ethos of a school
- Providing a sense of belonging and identity
- Setting an appropriate tone for education

Skoolkit stock the majority of our uniform. A very small number of low cost items are required to be purchased from Skoolkit (detailed below), however for most items parents are free to source these from any supplier, as long as items purchased are in a style closely matching the ones pictured within this policy.

We also have good quality second hand uniform available to purchase from the school and hold regular uniform sales events.

As a school, we have ensured that this policy has been developed, and will be implemented with, the Human Rights Act 1998 and the Equality Act 2010 in mind as well taking safeguarding requirements and the health and safety of all pupils into account.

Winter uniform

Worn from the 1st October until the end of the Spring term

Option 1	Option 2
<ul style="list-style-type: none"> • Dark navy blue box pleated, drop waist pinafore dress (in a style similar to the one pictured below) – worn with white long or short sleeved school shirt (not polo shirt) • <i>Optional</i> Red sash from Year 1 upwards (sash to be purchased from Skoolkit) • Year 5 and Year 6 pupils may wear a dark navy pleated skirt (similar style to the one pictured below) - no shorter than knee length - permanent wide pleats ('box pleat') - not jersey material • Dresses/skirts worn with simple, plain white socks or navy blue/red tights • Plain dark navy blue long sleeved 'V' neck pullover or a plain, dark navy blue long sleeved 'V' neck cardigan • Red tie (elasticated in Year R/KS1) – to be purchased from Skoolkit • Shoes in plain black, navy blue or red. Traditional or a more substantial style are suggested. <u>These should not be trainers, a slip on or high/fashion heel style.</u> 	<ul style="list-style-type: none"> • Mid grey short or long trousers of a traditional school (similar style to the picture below) - no jersey, Lycra or leggings/'jeggings' styles • Trousers/shorts worn with plain grey socks • White long or short sleeved school shirt (not polo shirt) • Plain dark navy blue long sleeved 'V' neck pullover • Red tie (elasticated in Year R/KS1) – to be purchased from Skoolkit • Shoes in plain black, navy blue or red. Traditional or a more substantial style are suggested. <u>These should not be trainers, a slip on or high/fashion heel style.</u>

Style examples



Summer uniform

*Worn during the summer term and the start of the Autumn Term until 30th September
(or the Monday following this should 30th September fall on a weekend)*

Option 1	Option 2
<ul style="list-style-type: none"> • Gingham checked summer dress (light blue) in a style similar to the one pictured (no fully white collars or pocket tops) – worn with simple, plain white socks • Plain dark navy blue long sleeved 'V' neck pullover or a plain, dark navy blue long sleeved 'V' neck cardigan • Shoes/sandals in plain black, navy blue or red. Traditional or a more substantial style are suggested. <u>These should not be trainers, a slip on, open-toe or high/fashion heel style.</u> • Please note: Pupils in Year 6 may choose to continue to wear their winter uniform throughout the summer months. 	<ul style="list-style-type: none"> • Mid grey short or long trousers of a traditional school design – worn with a white school shirt (long sleeved or short sleeved) and plain grey socks • Plain dark navy blue long sleeved 'V' neck pullover • Red tie • Shoes/sandals in plain black, navy blue or red. Traditional or a more substantial style are suggested. <u>These should not be trainers, a slip on, open-toe or high/fashion heel style.</u>

Style examples



Games and PE uniform

- White plain polo style shirt (or school polo shirt with logo – optional from Skoolkit)
- Navy blue shorts in the style pictured (not jersey or cycling short style)
- White ankle socks (plain)
- Plain navy blue tracksuit (no stripes or logos)
- Children may wish to wear the branded school tracksuit which is available from Skoolkit
- Black trainers (with discrete or no logos)



Coats

- A plain, navy blue, single-breasted blazer may be worn. A blazer with an embroidered school badge is available from Skoolkit (optional)
- There is no need to buy a separate coat for school.
- Coats must be warm and suitable for outdoor play. Reflective, bright colours will help with visibility, especially in the winter months. Any logos must be discrete or small.

Bags

- PE bag with the school logo (from Skoolkit), or similar size and style navy blue or red drawstring bag (see picture)
- Book bag (only the style available from the school office due to storage space restrictions) –No other bag is permitted, due to lack of storage space.



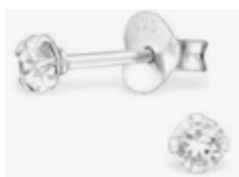
Hats, gloves and scarves

- Plain navy-blue summer hat (baseball cap style or legionnaire style) - optional school design summer hat in a choice of 2 styles is available from Skoolkit
- Winter hats, gloves and scarves can be plain navy, black or red. Alternatively, you can choose to provide a hat, gloves and scarf in their house colours. Above all, your children must be warm.
- There is an optional school design winter hat is available from Skoolkit

Jewellery and other items

- Earrings must be removed for all physical activity and removal will be the responsibility of the child (no adult may assist with the removal or replacement of earrings)
- No other body piercings are permitted.
- Make-up is not permitted at school (including fake tans, nail polish, visible temporary tattoos etc)
- A sensibly sized watch is allowed but no responsibility can be taken for lost or damaged watches worn at school. Children should not wear overly elaborate watches with lots of different functions as they can often become a distraction during lessons (this includes 'smart watches' or similar)
- Other jewellery type items are not permitted, including items such as 'fit bits' or smart watches.

See earring examples:



Hair

- Children are not allowed to have bleached or coloured hair
- Hair-cuts below a number 3 grade are not allowed
- Hair gel or wax should be kept to a minimum
- No exaggerated hairstyles are allowed including line/patterning through hair cutting or shaving some areas much shorter than others, for example
- Hair should not obscure vision (e.g. very long fringes) and should be neatly tied back at all times when shoulder length (e.g. using clips/hairbands to keep hair out of eyes)
- Hair decorations should be purely functional (flat clips, plain hairbands or scrunchies in school colours of red and blue - large decorations or bows are not allowed)

Lost property and second-hand uniform

It is essential that all items of uniform are named otherwise items are likely to be lost. The school has a lost property 'bin' which children can look in if they think they have lost an item. If parents wish to check lost property, then they may do this after school only. (Parents need to come to the school office at the end of the day if they wish to do this).

Second-hand uniform sales are held regularly throughout the year.

Non-uniform days

Rules relating to hair, jewellery and other items also apply on non-uniform days. Children must not wear clothing with slogans or phrases that are inappropriate for primary school.