



St Alban's C of E Aided Primary School
Inspired to make a difference in God's world with excellence and love



WEEKLY BULLETIN 19TH DECEMBER 2025

Headteacher Message

Dear Parents/carers,

Thank you to those of you who have re-organised diaries and events to ensure that you could attend the Early Years/Key Stage One nativity yesterday and also the Upper Key Stage Two Carol Service. I do hope that you all enjoyed those as much as we did!

As we approach the joy and excitement of Christmas, I would like to take a moment to reflect on what has been a truly special term for our school community. This season invites us to pause, to give thanks and to look with hope towards the future.

Throughout this term, our school vision has been clearly lived out: "Inspired to make a difference in God's world, with excellence and love." In our classrooms, children have worked with focus and determination, striving for excellence in their learning. They have shown curiosity, resilience and pride in their achievements, reminding us daily of the potential within every child.

At the same time, our values of love, courage and fellowship have been evident in the way our children care for one another. We have seen pupils supporting friends, welcoming new faces and reaching out to our wider community through acts of generosity and compassion. These moments reflect the true message of Christmas – love in action.

Our collective worship and class reflections this term have helped children to think deeply about thankfulness, hope and peace. As a Church of England school, we are proud to place these Christian values at the heart of school life, ensuring that our children grow not only academically, but also spiritually, morally and socially.

I would like to thank our dedicated staff for their commitment and care and our families for your ongoing support and partnership. Together, we are creating a school where every child feels valued, encouraged and inspired to make a positive difference.

As we look ahead to the Christmas break, I hope it is a time of rest, joy and togetherness for you and your loved ones. May the peace and hope of Christmas be with you all.

I look forward to seeing you on Tuesday 6th January 2026 for the start of the Spring term.

With warmest wishes, Mrs Goldsworthy

IMPORTANT:

Please remember that there should be no nuts or items with nuts in your child's packed lunch. Please help us to keep **EVERYONE** safe - we aim to be a **NUT** free school.

What's in this bulletin?

- Headteacher message
- You said, we did...
- Upcoming trips
- Wake Up Wednesday: ✨
- Uniform Reminders
- Celebrations
- Safeguarding: Who to contact
- Attendance ✨
- Collective Worship
- Football clubs
- INSET days
- Reminders for next week



You said, we did...

Following the 'two stars and a wish' speech bubble that parents had the opportunity to complete earlier this term, some parents requested more information about SEN and what support is offered to who.

There are two key aspects to our approach to supporting children with additional needs:

- Ordinarily Available Provision (OAP) - what support is typically available within a mainstream classroom to help all learners succeed.
- The Graduated Approach - How we assess, plan, do and review support for children with SEN, ensuring that provision is tailored to individual needs.

For more information about Inclusion/SEND at St Alban's - please visit

<https://www.stalbansprimaryschool.co.uk/send>

Parents/carers of children with SEN have been invited to an information session in the Spring term.

Upcoming Trips



Butser Ancient Farm - Year 3



Winchester Science Centre - Year 5

Havant Garden Centre - Year R



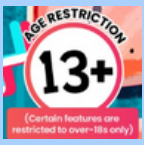
These are just some of the exciting external trips we have planned for the Spring term!

Details will be shared with parents once arrangements are finalised.

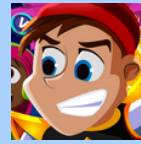


Chichester Harbour - Year 2

Love, Courage and Fellowship
Inspired to make a difference in God's world
with excellence and love.



Safeguarding: Wake Up Wednesday!



This week's #WakeUpWednesday focuses on AI toys.

This festive season, the newest toys on the shelves do not just blink or make noise; they listen. Many now come with artificial intelligence (AI), allowing them to talk, learn, and even respond to a child's emotions. These toys can be educational and engaging, but they also collect, store, and process information. This week's guide explains what that means for families and why it matters.

Risks include toys that listen and learn, weak security protections, artificial voices, pressure to keep engaging, marketing through play, and playtime as data training.

This will be added to the website

<https://www.stalbansprimaryschool.co.uk/onlinesafety> and shared on our school Facebook page each week.

Uniform Reminders

When purchasing new school uniform for the year, please consult the policy:

<https://www.stalbansprimaryschool.co.uk/policies/>

IMPORTANT:

PE kits **MUST** be a **PLAIN NAVY TRACKSUIT** or **SHORTS**- no stripes or logos and **T-SHIRTS** must be a **PLAIN WHITE POLO STYLE**.

Check out the new designs - available from Skollkit!

We want to continue to look smart and if we all follow the uniform guidelines, we will. Please also remember **trainers should be BLACK** and with discrete, or preferably, **NO LOGO**.

Attendance and punctuality

"Every day of school missed is a day stolen from a child's future,"

Bridget Phillipson (Education Secretary), August 2025

Whole school - 93.9% (national 94.7%)

PLEASE ENSURE YOUR CHILD IS IN SCHOOL EVERY DAY UNLESS THEY ARE REALLY UNWELL; if you child feels under-the-weather, please send them into school and we can see how they go!

Average attendance by class to date:

- Oak (R) - 91.6%
- Cherry (1) - 90.0%
- Rowan (2) - 96.2%
- Birch (3) - 93.6%
- Hawthorn (4) - 93.4%
- Lime (5) - 96.3%
- Alder (6) - 94.8%

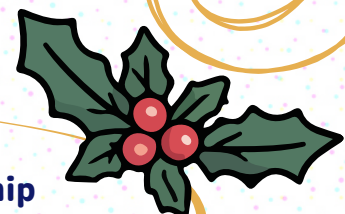


If you are unsure whether to keep your child off school if they are unwell, please look at this page on our website:

<https://www.stalbansprimaryschool.co.uk/attendance>



**Love, Courage and Fellowship
Inspired to make a difference in God's world
with excellence and love.**



Celebrations



Headteacher Awards go to:

This half term we are focusing on the learning skill of **COLLABORATION.**

- Year R - Rocco and Boycee
- Year 1 - Mabel and Beau
- Year 2 - Lottie and Jaxon
- Year 3 - Amaya and Leila
- Year 4 - Margo and Ernie
- Year 5 - Isaac and Cruz
- Year 6 - Thomas and Evie

Step Badges go to:

Football Clubs

Parents/carers should have received an email this week about registering for the KS1 (Better Edge Coaching) and KS2 (CM Sports) football clubs.

If your child is interested, please sign up to ensure that these clubs can continue to run - they risk being cancelled if there is not enough interest.

Flyers can be found here:

<https://www.stalbanspriaryschool.co.uk/extracurricular-activities>

Safeguarding: Who to contact

While school will be closed during the Christmas break, the well-being of our children and families remains a priority. If you have any safeguarding concerns or need support during the holidays, please don't hesitate to reach out to the appropriate services:

- In an emergency, always call 999.
- You can also contact the police, following this link: <https://www.police.uk/pu/contact-us/>
- For non-emergency concerns about a child's safety or well-being, and you wish to report any welfare/safeguarding concerns, please complete the [online enquiry form](#) or:
- Telephone: 0300 555 1384
- Out of hours: 0300 555 1373
- NSPCC helpline: 0808 800 5000
- Childline (for children): 0800 1111 or www.childline.org.uk

If you need to contact the school for any urgent reason, you can email admin@stalbans.hants.sch.uk and we will respond as soon as possible.

We hope all our families have a safe, restful, and happy Christmas.

**Love, Courage and Fellowship
Inspired to make a difference in God's world
with excellence and love.**

Collective Worship

We are focusing on peace this half term and how Christians believe that tranquillity and harmony comes from God. For children, this is about a feeling of calmness and safety that God gives us, even when we are going through tricky times.

This week we have explored the meaning of the second purple candle on the advent wreath: **PEACE**. We have explored the part the angels played in the Christmas Story.



Dear God,
Thank you for the gift of peace.
Help us to be peacemakers in our school,
in our homes, and in our world.
Amen.



All of our Collective Worshipings can be found on our website
<https://www.stalbanprimaryschool.co.uk/collectiveworship>

INSET DAYS 2025-2026

The remainder of the INSET days for this academic year are:

Monday 5th January 2026

Friday 1st May 2026

Friday 3rd July 2026

Please make a note of these. The website will also be updated and we will continue to remind you on bulletins throughout the year.

Parking Reminders

We remind parents to please park considerately. We have had several reports of cars parked in a way that blocks St Alban's Road - please be mindful and consider parking further away to keep access free for large vehicles such as buses and emergency services.

Reminders for 22.12.25

22.12.25 to 02.01.26

Christmas Holidays - School closed to all pupils and staff

05.01.26

INSET Day - School closed to all pupils

06.01.26

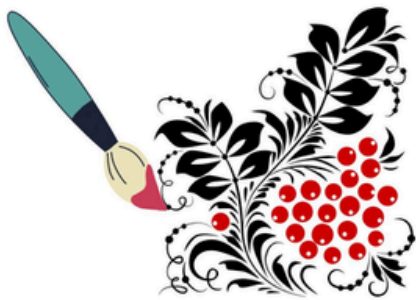
Start of the Spring term - all pupils return to school

**Love, Courage and Fellowship
Inspired to make a difference in God's world
with excellence and love.**

Ukrainian Folk Painting

Christmas Workshop

Havant Library
Monday 22 December
10:30am
Aimed at children aged 8+



Warm & Welcome Event

Leigh Park Library
Friday 30th January 2026
10am -1pm

Struggling with energy bills and the cost of living?

Please drop-in to speak to local organisations who can provide help and advice. No appointment needed.



Free



Warm



Welcoming



Safe

Warm & Welcome Event

Havant Library
Friday 23 January , 10am -1:30pm

Struggling with energy bills and the cost of living?

Please drop-in to speak to local organisations who can provide help and advice. No appointment needed.



Our libraries are:



Free



Warm



Welcoming



Safe

**Love, Courage and Fellowship
Inspired to make a difference in God's world
with excellence and love.**

